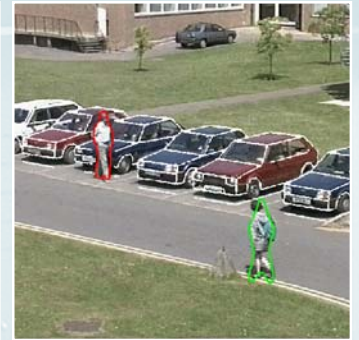
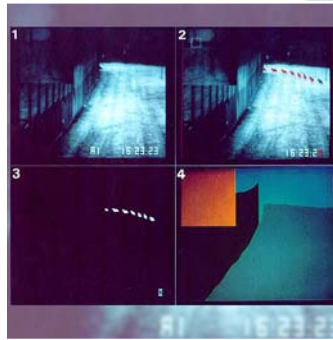
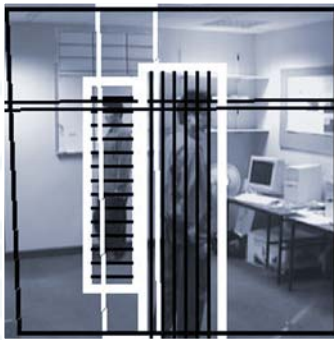
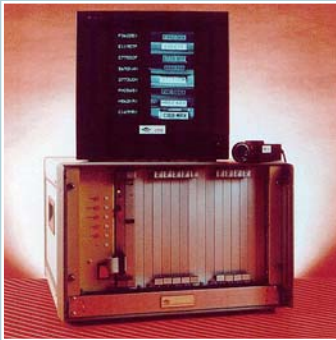


Machine Vision for Security and Surveillance



Images, such as those from closed circuit television cameras, are routinely used in security systems, despite being of poor quality and laborious to interpret. Machine vision provides methods to enhance picture quality, interpret events and monitor complex scenes. Example applications include Number-Plate Identification, Tracking People, Face Recognition and Intruder Monitoring.

Machine Vision provides the ability to

- ▶ TRACK OBJECTS AND PEOPLE IN 3D
- ▶ RECOGNISE AND REGISTER SPECIFIC AND GENERIC OBJECTS
- ▶ MODEL AND IDENTIFY GESTURES, ACTIONS, AND BEHAVIOUR
- ▶ PERFORM BIOMETRIC MEASUREMENTS

Leading to

- ▶ SAFER ENVIRONMENTS
- ▶ EFFICIENT NON-OBTRUSIVE MONITORING
- ▶ REDUCED CRIME RATES

contacting the BMVA: <http://www.bmva.ac.uk/>

Prof. Maria Petrou, BMVA Chairman, The British Machine Vision Association

University of Surrey, School of Electronics, Computing and Mathematics, Guildford, GU2 7XH, UK

telephone: +44 1483 879801 fax: +44 1483 876031 email: m.petrou@eim.surrey.ac.uk